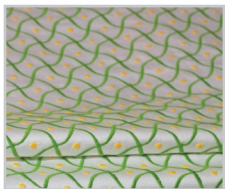




## Chella Textiles "Firsts" 2000-2010

For the past decade, Chella Textiles' visionaries Lee Menichella and Scott Bodenner have imagined and executed a series of "firsts" in the solution-dyed acrylic arena. Exceptionally beautiful and uncommonly durable, for use both indoors and out, these logic-defying performance fabrics define the livable luxe for which Chella is renowned.



**Versailles**  
4600-38 Verde/Garibaldi  
The first solution-dyed acrylic **embroidery**  
*Introduced December 2003*



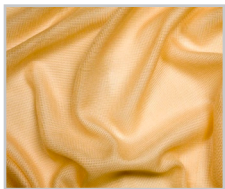
**Montecatini**  
4200-94 Mulberry  
The first solution-dyed acrylic **chenille**  
*Introduced March 2005*



**Aretha**  
5500-54 Caribe/Kiwi  
The first solution-dyed acrylic **jacquard woven chenille**  
*Introduced January 2006*



**Glissando**  
604-76 Moonshadow  
The first solution-dyed acrylic aluminum-coated **metallic sheer**  
*Introduced April 2006*



**Sun Screen**  
8100-83 Bamboo  
The first solution-dyed acrylic **lino weave sheer**  
*Introduced September 2006*



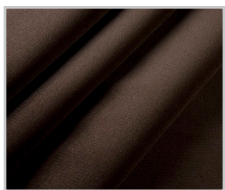
**Spiral Matelasse**  
8600-48 Rosa  
The first solution-dyed acrylic true **matelasse** woven with stuffer yarn  
*Introduced January 2007*



**Coco Tweed**  
8700-54 Caribe  
The first solution-dyed acrylic **tweed** with boucle yarn in both warp and fill  
*Introduced January 2007*



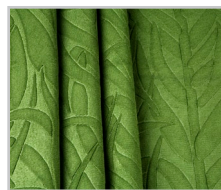
**Crystal Raffia**  
9000-21 Alabaster  
The first solution-dyed acrylic "**raffia**" (woven of polyolefin fibers)  
*Introduced September 2007*



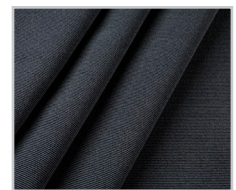
**Plush Velvet**  
9200-31 Coco  
The first solution-dyed acrylic **velvet**  
*Introduced September 2007*



**Luxe Boucle**  
8900-92 Salt & Pepper  
The first solution-dyed acrylic **boucle**  
*Introduced September 2007*



**Amazonia Velvet**  
9600-88 Moss  
The first solution-dyed acrylic **embossed velvet**  
*Introduced February 2008*



**Classic Epingle**  
9400-87 Smoke  
The first solution-dyed acrylic **Epingle**  
*Introduced February 2008*

*Celebrating* TEN YEARS of INNOVATION